



Guftagoo



Chalo, Sab Milkar is Guftagoo ko Dilkash Banaye

FROM THE MANAGING TRUSTEE'S DESK:

At Samerth, we are thrilled to introduce the first edition of our newsletter, designed to circulate the essence of our work and foster communication within our geographically dispersed teams in Kutch, Ahmedabad, and Chhattisgarh. Recognizing the challenges posed by distance and the need for updates, we hope this space bridges gaps, enhances learning, and aligns our efforts seamlessly.

Educational Triumphs and Community Work at Samerth:

At Samerth – Ahmedabad, our educational program has celebrated a remarkable milestone with the completion of its journey named "Safarnama." We are thrilled to share that this enlightening book is now available in printed form, marking a new chapter in our educational endeavours.

Simultaneously, our dedicated team in Kutch is on an unwavering mission to create essential drinking water bodies in remote villages—areas that remain outside the reach of government water and irrigation schemes. Initiatives like these, aim to uplift the most vulnerable groups, such as the Parkara Kolis, the cattle grazers of Kutch, who frequently lack fundamental entitlements like ration cards and birth certificates. This also includes the Baiga's (Particularly Vulnerable Tribal Groups) and other tribal communities of Chhattisgarh, as well as families migrating from various locations within Chhattisgarh, offering them alternatives for their children's care and education.

In addition, we are committed to supporting migrant communities that flock to cities like Ahmedabad in pursuit of employment opportunities. Our work with Persons with Disabilities (PwDs) stands out as we provide unique services to families who otherwise have no access to such support. Samerth's pedagogy for learning and teaching within the slums and Basti's of Ahmedabad and adjacent locations has now garnered recognition and acclaim, setting a standard for educational practices in such communities.

Mosaic of Insights: Cultivating a Culture of Reflection and Growth:

We have an abundance of experiences, lessons, and insights to share. It is equally important to reflect on our challenges and setbacks, understanding that learning from these experiences is essential to forge a successful path ahead.

Let us continue our journey of sharing, learning, and growing together, transforming our collective experience into a powerful force for positive change.

Samerth's guiding philosophy is to reach the unreached, ensuring dignified living conditions within their natural or adopted ecosystems. Our programs are diverse, rich with learnings and experiences, and we believe this newsletter will serve as a platform for everyone in the organization to express their thoughts and share their experiences.

We invite everyone to embrace this space, making it vibrant with your insights, artwork, and any form of creative expression. We are also eager to receive critical feedback, opinions, and articles from our stakeholders, friends, donors, government officials, and others.

Let us enjoy and nurture this free-flowing space, allowing it to grow organically as we move forward.

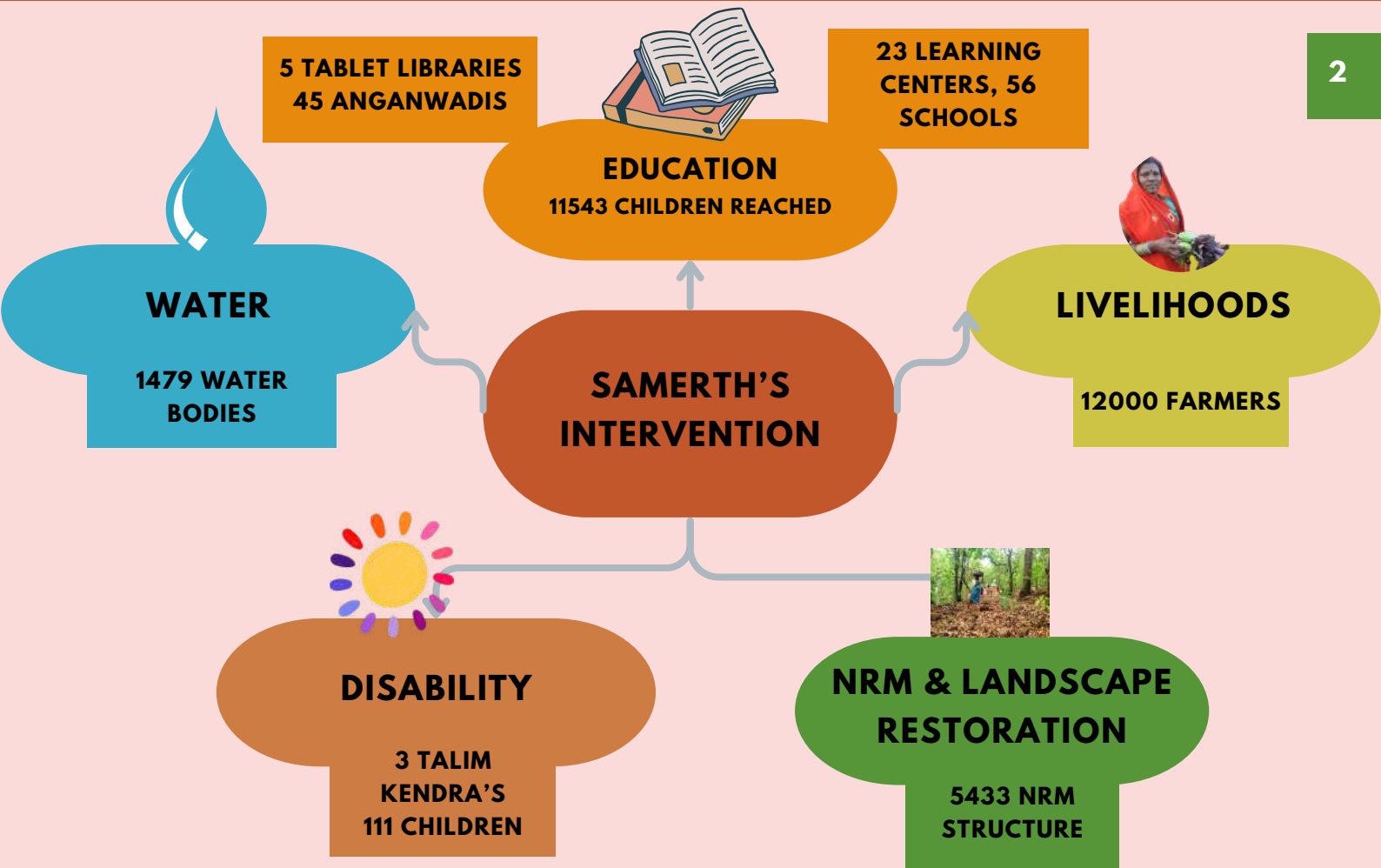
चलो, सब मिलकर इस गुफ्तगू को दिलकश बनाये...

**Aapki,
Gazala**

CONTENT:

1. Samerth Intervention
2. समर्थ की यात्रा पर कविता
3. Bidri Festival: Sowing Seeds of Tradition and Community Unity
4. सीखना... सिखाना
5. Community Voices
6. परिणाम की कहानियाँ
7. Collaboration- United for Change
8. सीख से अनुभव की और
9. समर्थ गीत
10. Samerth in News





समर्थ की यात्रा पर कविता

स्वप्नपूर्ती

वेळ होती ती काळोख अंधाराची,
वर्ष 2001 च्या त्या भूकंपाची
कच्छ च्या धर्तीवर हादरली ती जनता
विसखळलेले जीवन, आश्रय आणि त्या स्वप्नांची । 1 ।

अश्रूंच्या पुराणे भारावलेले ते मन,
हृदयात धगधगणारा तो वणवा
घेतली पेट त्या विचारांची,
मनी संकल्प घेऊन निघाली समर्थ
पीडित, शोषित, वंचितांच्या सशक्तीकरणाची । 2 ।

अस्तित्वात आली तो विचारांचा समर्थ
दिली जीवना, स्वतंत्र आणि विकासाला अर्थ
सांगतो रितेश, गोष्ट ही ध्येयपूर्ती ची
समर्थ करी वाटचाल स्वप्नपूर्ती ची । 3 ।

WRITTEN BY - रितेश शेंडे

Bidri Festival- Sowing Seeds of Tradition and Community Unity

"Bidri" is a significant festival celebrated by the Baiga and Gond tribal communities, marking the beginning of the farming year. The village elders, including the Sian (Older Person) and Diwan (village chief), decide the date for the festival. On the day of the festival, villagers bring seeds of Paddy, Maize, Jowar, and Kodo in new bamboo baskets.

The head of the Baiga community conducts a ritual where a cock or hen is offered at the village's sacred place to purify the seeds and ensure crop diversity. The villagers place their seeds in a Tukni (bamboo basket), and the head Baiga mixes all the seeds in a large bamboo basket. These mixed seeds are then distributed to the farmers in a Dona (leaf basket). Farmers mix a portion of these seeds with their stored seeds to sow during the monsoon.

In addition to agricultural preparations, the community sets local wage rates, the price of Mohua liquor, and norms for cattle grazing and the remuneration of Rauts (the cowmen). Through the Bidri festival, the community not only initiates their farming activities but also establishes essential norms and regulations to support their agricultural practices and overall well-being.

This summer, Samerth Charitable Trust, in partnership with the education department, conducted Summer Camps in 27 schools across five districts of Chhattisgarh and 9 Learning Center's in Ahmadabad. Children enjoyed engaging activities at our Learning Resource Centre's and Anganwadi's from fun games and creative crafts to inspiring upcycling projects. Outdoor excursions fostered a connection with nature, and digital learning sessions, along with movie screenings via mini projectors, added excitement. The enthusiasm and eagerness of the children during their summer break showcased their thirst for knowledge and readiness to explore beyond conventional boundaries.



Samerth Charitable Trust organized an exposure visit to the Grameen Samashya Mukti Trust in Yavatmal District, Maharashtra, for project teams and Village Development Committee members. The visit focused on Community Forest Rights, forest-based livelihoods, Gram Sabha participation, and capacity building. Through interactive training sessions, discussions and demonstrations participants gained valuable knowledge. They observed successful models and committed to applying these learnings to empower their communities. This visit marks a significant step towards sustainable and inclusive community development.

Community VOICES

समर्थ चैरिटेबल ट्रस्ट के समर्थन से, हमारे बच्चे रुबिका और रूपेश ने लर्निंग रिसोर्स सेंटर (एलआरसी) में नियमित रूप से जाने के बाद अपनी पढ़ाई में महत्वपूर्ण सुधार दिखाया है। एक प्रवासी परिवार से होने के नाते, हमने शुरू में शिक्षा के महत्व को कम आंका था। हालांकि, दोनों अब सीखने का पूर्ण आनंद ले रहे हैं। हम इस समर्थन के लिए अत्यंत आभारी हैं जो हमारे बच्चों को सफलता की ओर ले जा रहा है।

- तुलसा यादव (माता)

“समर्थ संस्था द्वारा हमारे गाव में लाख के खेती को प्रोत्साहित किया जा रहा है जिसमें संस्था द्वारा हम किसानों की कांकेर चारामा लाख की खेती के ट्रेनिंग के लिए लेके गए , जहाँ हमने लाख से होने वाले फायदे के बारे में जाना। वहाँ से सिख के आने के बाद संस्था द्वारा हम लोगों के लाख बिज और ट्रेनिंग दिया गया। पहले साल लाख से अच्छा फायदा हुआ इसके चलते हुए इस साल किसान और कुसुम पेड़ की संख्या भी बढ़ी और अब किसान लाख की खेती से अच्छा मुनाफा कमा रहे है। इसे देखते हुए दुसरे गाव के लोग भी लाख की खेती करने के लिए प्रेरित हुए है।”

- दसरथ धुर्वे , गाव का पटेल , ग्राम नेवराटोला



Community established seed banks with the support of Samerth Charitable Trust in 12 villages across 4 blocks in 3 districts. Distributing over 37 quintals of indigenous seeds to 350+ farmers. Seeds include Kodo millet, Kutki millet, rice, pigeon pea, maize, finger millet, and vegetables like tomato, okra, and bitter gourd. This initiative reduces reliance on costly hybrid seeds and mitigates pest and disease issues.



परिणाम की कहानियाँ

Samerth Charitable Trust has supported landscape restoration by aiding the Baiga communities in Kabripatra village, Kawardha district, to establish a community nursery. This nursery supplies plants like Mahua, Koilar, Harra, Bamboo, and seasonal vegetables. Inspired by this success, neighboring villages Barhapani and Pendri started their own nurseries, collectively cultivating 13,604 diverse saplings. These nurseries enhance self-sufficiency, environmental stewardship, and local economic growth, showcasing community resilience and resourcefulness.



United for Change

A successful renewal of the Memorandum of Understanding (MoU) between the State Council of Educational Research and Training (SCERT) and Samerth Charitable Trust, Chhattisgarh. This MoU solidifies our collaborative efforts in five districts of Chhattisgarh, supported by work orders from respective District Education Officers (DEOs). The focus of these initiatives is to provide age-appropriate learning opportunities for children from migrant families, ensuring their continued educational progress. This partnership underscores our commitment to enhancing educational outcomes and fostering inclusive learning environments.



Samerth is implementing a strategic initiatives in Bemetara to enhance vegetable cultivation, has yielded impressive results by engaging 30 farmers across 12 villages. Each farmer dedicated half an acre of land to onion cultivation, leading to substantial economic gains. The combined efforts resulted in a total production of 950 quintals of onions, with each farmer earning an average of ₹60,000, significantly boosting their annual income. Labho Dhruv from Nawalpur village has emerged as a model farmer, demonstrating the transformative potential of onion farming to enhance livelihoods and drive sustainable development.

Mukesh Patel

सीख से अनुभव की और ..

Harkirat Kour



मैंने तीन दिवसीय पारिस्थितिक तंत्र बहाली और पुनरुत्पादन प्रशिक्षण में भाग लिया। इसमें छह महीने के कोर्स के तहत 40% क्लासरूम शिक्षा और 60% फील्ड प्रैक्टिस शामिल थे। छत्तीसगढ़ की 19 गैर-सरकारी संस्थाओं के साथ यह प्रशिक्षण सामुदायिक वन संसाधन अधिकार और एमएफपी आधारित आजीविका पर केंद्रित था। हमने पारिस्थितिक तंत्र के घटकों, इकोसिस्टमों की महत्वपूर्णता, ग्राउंडवाटर रिचार्ज और अन्य प्रमुख कारकों पर गहरी समझ प्राप्त की। यह समझ मुझे अपने लैंडस्केप की रेस्टोरेशन में मदद करेगी। इस प्रशिक्षण में सांप संरक्षण, पक्षी संरक्षण, जैविक खेती, और शाकाहार को बढ़ावा देने वाले प्रकृति प्रेमी भी शामिल थे।

समर्थ चैरिटेबल ट्रस्ट के वरिष्ठ नेतृत्व और विशेषज्ञ मार्गदर्शन में तीन चरणीय परिणाम आधारित प्रबंधन (RBM) प्रशिक्षण कार्यक्रम में भाग लिया। पहले चरण में, मैंने RBM प्रक्रिया और "थ्योरी ऑफ चेंज" को समझा। दूसरे चरण में, हमने समुदाय के विकास और सहभागिता पर ध्यान दिया, अपनी थ्योरी ऑफ चेंज को विशेषज्ञों की मदद से संशोधित किया, और MEL प्रणाली में सुधार किया। तीसरे चरण में, हमने परिणाम सूचकों के आधार पर निगरानी साधन बनाए। इस प्रशिक्षण ने मेरे ज्ञान, अनुभव और कौशल को बढ़ाया। इसके लिए मैं अपनी संस्था प्रमुख और वरिष्ठ विशेषज्ञों का धन्यवाद करती हूँ।

समर्थ गीत

समर्थ से-न्टर गुलशन गुलशन
मडेके ज़ाए मधुवन मधुवन ...समर्थ...
प्यारां येनां डूल अमे तो
मडेकावीशुं आंगन आंगनसमर्थ....
समर्थ क्लासना ऋणी यथेने
नाम करीशुं रोशन रोशनसमर्थ
शिक्षक येना प्यारां प्यारां
पाठ लषावे न्यारा न्यारासमर्थ....
माता पिता नी आशिष थी
पूर्व थशे अरमान अमारासमर्थ....
काम लगीरथ, समर्थ क्लासना
ज़ाए कोठ, संकट भोयनसमर्थ.....
समर्थ क्लासमां लषावा माटे
मनडुं नाये थन थन थन थन....समर्थ...
समर्थ से-न्टर गुलशन गुलशन
मडेके ज़ाए मधुवन मधुवन



Samerth in NEWS



Get in Touch!

समर्थ SAMERTH

A L A

✉ samerthtrust1992@gmail.com
 🌐 www.samerth.org
 ✕ @SamerthTrust
 in linkedin.com/samerthtrust
 📷 samerthcharitabletrust