

A Quest Towards Collective Action for Freedom & Development



1 NO POVERTY



4 QUALITY EDUCATION



5 GENDER EQUALITY



ANNUAL REPORT
2023-24

6 CLEAN WATER AND SANITATION



13 CLIMATE ACTION



14 LIFE BELOW WATER



15 LIFE ON LAND



FROM VISION TO ACTION: ALIGNING OUR WORK WITH THE SDGS FOR LASTING IMPACT

SUSTAINABLE DEVELOPMENT GOALS

Reflecting on the past 25 years

FROM THE MANAGING TRUSTEE'S DESK

Dear Friends and Stakeholders,

The year gone by has been filled with activities that have elevated our mission, and I extend my heartfelt gratitude to our dedicated team and the Board for their unwavering support and guidance during these remarkable times.

Our diverse portfolio and the successful execution of focused projects have allowed Samerth to gain visibility across all three regions: Ahmedabad (urban and semi-urban), Kutch, and Chhattisgarh. I am pleased to report that Samerth has achieved significant growth for FY 2023-24, reaching Rs. 35,76,54,796/-.

Our Key Milestones of 2023-24: Strengthening Partnerships, Advancing Sustainability, and Celebrating 30 Years of Impact:

Livelihoods India Summit 2023: In January 2024, our senior team attended a summit focused on enhancing livelihoods for marginalized communities. Key themes included inclusive value chains, technology for livelihood enhancement, women's enterprises, and climate change impacts. Esteemed speakers from government, private sector, civil society, and UN agencies enriched the dialogue, providing a platform to connect with diverse stakeholders and strategize sustainable solutions at Samerth.

Edge Edgelive Annual Event 2024: The event highlighted the power of collaboration, with leaders sharing insights on achieving impactful goals. It offered valuable lessons to strengthen our networking and amplify community impact.

Green Hub Central India Youth Fellowship Program: We welcomed two young tribal girls to work with us in Kutch, who documented their experience in a video about Samerth's work. The film can be viewed at:

https://drive.google.com/file/d/1dwbrc3Fg9Xchh1SXEEJ_fCsySW-5Dmj/view

Aquifer Mapping Initiative: We launched an aquifer mapping initiative in Kabirdham District, Chhattisgarh, to study groundwater dynamics in the Sakri sub-basin of the Mahanadi River. The findings aim to guide village-level water planning, landscape restoration and shape government policies.

International Women's Day: On this day, Rashtriya Raksha University, Gandhinagar, invited Samerth, represented by me, to speak on the role of women in shaping a developed Bharat by 2047, highlighting the need for investing in women to drive progress.

Visit from the American India Foundation: Trustees, donors, and the CEO from the USA visited our project area in Chhattisgarh, engaging with stakeholders to understand the impact of our migration project on children, teachers, and parents.

IKEA Foundation Visit: In November 2023, we hosted a team from the IKEA Foundation to discuss our projects in Chhattisgarh and the implementation of the Common ground approach, emphasizing ecological principles in planning processes.

Strategic Plan Development: We finalized a five-year strategic plan for Samerth, now available for viewing. As the organization advances, it is essential to update our strategy to adapt to the changing external environment. For more details, please find the link to the document [Strategic Roadmap](#).

31st Anniversary Celebration: The team across all regions celebrated 31 years of Samerth's journey, recognizing the contributions of the communities, donors, and team members who have helped us reach even the most challenging areas.

Indo-Global Social Service Society Event: In September 2023, the state lead of Chhattisgarh participated in the "National Dialogue on Resilience" in Delhi.

Participation in the 4th World Social Forum 2024: This event, held two decades after the previous one in 2004, was attended by our Executive Director and Senior Programme Adviser, focusing on issues such as economic inequality, migration, and social justice.

Visit to Urmul Trust: In March 2024, we reconnected with Urmul Trust to learn and collaborate on strategies addressing climate change and improving sustainable agricultural practices.

Through our 31-year legacy, Samerth has continuously evolved by implementing innovative programs and strategies. With our strength, reliability, and solidarity, I believe we will emerge even stronger. I conclude by reaffirming our commitment to sustainable growth for Samerth and truly appreciate your ongoing support.

Gazala Paul
Executive Director & Managing Trustee

MAKING VISION A REALITY

OVER TWO DECADES, TEAM SAMERTH HAS WORKED RELENTLESSLY, EMPOWERED VULNERABLE MARGINALISED COMMUNITIES AND PROVIDED SOCIAL AS WELL AS ECONOMIC DIGNITY.

ABOUT SAMERTH

Samerth Charitable Trust, registered in 1992, is committed to empowering vulnerable communities through natural, resource management, sustainable livelihoods, and educational opportunities. We prioritize swift action, innovation, and the fusion of traditional wisdom with scientific acumen, particularly in emergencies and their aftermath.



VISION

To build a humane, sustainable and equitable society.

MISSION

To facilitate the empowerment of vulnerable communities and marginalized groups by helping them access their entitlements across all facets of human existence.

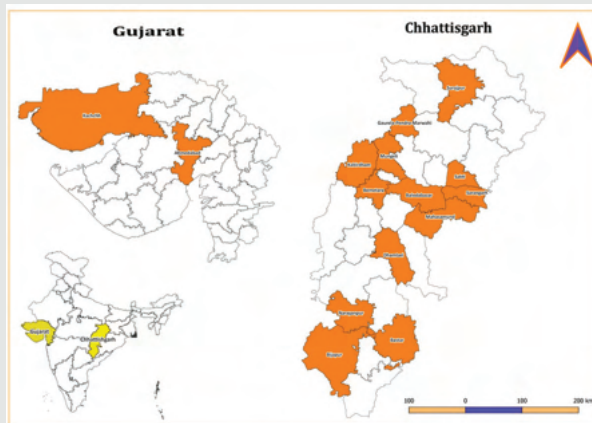
To advocate for the integration of provisions for excluded and marginalized groups through innovative models that influence policy making.

To actively promote gender-balanced development through inclusive, participatory and empowering initiatives.

THEMATIC AREAS



GEOGRAPHICAL INTERVENTION



Impacting over 6,000 students..... By Empowering Urban and Semi-Urban Communities through Quality Education Samerth's Journey in Ahmedabad



Samerth works in urban areas of Ahmedabad, including Juhapura, Sarkhej, Fatehwadi, Vejalpur, and semi-urban regions like Lambha and Sanand. These areas are inhabited by economically disadvantaged communities, including migrants, facing limited access to quality education. With overcrowded schools and sub-optimal teacher presence, Samerth addresses these challenges through innovative educational interventions, capacity building for educators, and additional learning resources to bridge gaps in teaching and infrastructure.

Samerth has expanded its reach through 14 Community Centers and 6 Digital Libraries, integrating traditional and digital learning. Since 2023, efforts have aligned with the National Education Policy (NEP), focusing on Jr. and Sr. KG and 6328, students from Grades 1 to 4 in 20 schools. A study revealed 73% of these children improved in foundational concepts, especially language.

Key initiatives include Teacher Training, Creative Pedagogy Modules, and a Resource Centre. Samerth team has trained 124 teachers and Anganwadi workers from 22 Anganwadis. Digital Libraries, equipped with 112 tablets, supported 587 students this year, facilitating vocational training and competitive exam preparation. Overall, Community and Digital Libraries have reached 1,500 and 1,400 students, respectively. With over two decades of work, Samerth has empowered local communities to actively engage in ensuring educational and learning needs of their children.



14

Community Center

06

Digital Libraries

20

School's

6328

Children

124

Teachers

22

Anganwadi Workers



Transforming Lives Through Inclusive Support: Samerth Talim Kendra's Impact on Specially Abled Children in Ahemadabad

In Juhapura, a settlement largely inhabited by low-income families, Samerth has established Talim Kendra, a rehabilitation center addressing the pressing needs of children with disabilities. This area faces significant challenges, including poverty, poor nutrition, early marriage and pregnancy, and prevalent consanguineous marriages, all contributing to a higher rate of disabilities among children. Recognizing a critical gap in services, Samerth Talim Kendra was founded to support these children, starting modestly with just two participants. Over time, its influence has expanded dramatically, now assisting over 564 children with various disabilities. Until 2024, this center stood as the sole provider of specialized services for children with intellectual and multiple disabilities within an 18-kilometer radius, underscoring its vital role in the community.

Samerth's Comprehensive Rehabilitative Services have transformed the lives of children with disabilities by offering tailored support in nutrition, rehabilitation, and special education through Individual Education Plans (IEPs). Specialized therapies, including physiotherapy for 83 children, speech therapy for 108 Children and 87 Children sensory therapy, and animal-assisted therapy for 40, have enhanced physical mobility, sensory processing, and emotional well-being.

Through Community-Based Rehabilitation and Skill Development program, Samerth has supported 17 children and trained 24 adults with disabilities in vocational skills like paper plate manufacturing and beadwork, generating Rs. 2,88,734 in sales. This initiative demonstrates the economic potential and self-sufficiency of individuals with disabilities.

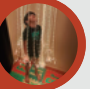
These efforts have fostered acceptance of disability, enabling 13 early intervention students to transition to regular schools and 24 individuals to secure employment in the past decade. Samerth continues to promote inclusivity and empowerment for people with disabilities.

83 Children supported through Physio- Therapy Sessions



108 Children supported through Speech Therapy and 87 Children supported through Sensory Therapy

40 Children supported through Animal- Assisted Therapy Sessions



24 adults with disabilities trained in vocational skills

17 adults with disabilities are supported with paper plate making & beadwork



Enabling 13 early intervention students to transition to regular schools

564 children supported through Samerth Talim Kendra's

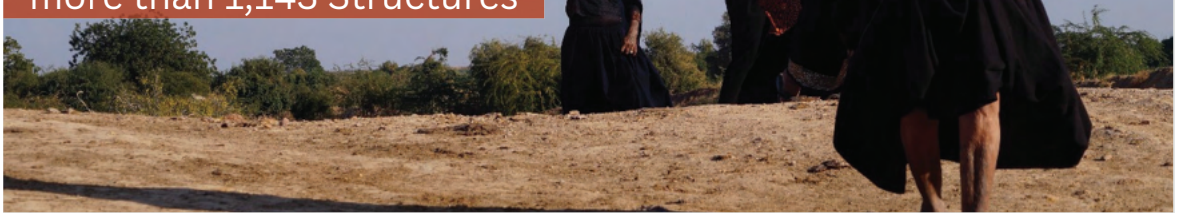


Safarnama: Showcasing Our Education Journey

In 2023, Samerth proudly launched Safarnama, a dynamic reflection of our educational journey and community impact. This initiative documented stories of transformation, resilience, and growth, offering the broader community, educators, and students an inspiring look into the strides made through our educational programs.

Integrated Approach to Water and Livelihoods Solutions in Kutch's Arid Landscape:

Water Conservation through more than 1,143 Structures



Samerth's work area in Kutch is characterized by an arid and saline desert landscape, where severe scarcity of water resources, lack of groundwater, and limited viable livelihood opportunities have created profound challenges for marginalized groups, including the Koli community and local shepherds.

Members of these communities often find themselves ensnared in semi-bonded labor situations within the salt pans or are relegated to subsisting on meager wages from menial work, highlighting the urgent need for interventions to improve their living conditions and economic prospects. The systemic hardships faced by these families underscore the necessity of targeted initiatives aimed at fostering resilience, enhancing access to sustainable livelihoods, and addressing critical issues like water scarcity and economic marginalization.

By promoting equitable access to water resources, introducing participatory groundwater management practices, and leveraging government schemes for livelihood enhancement, the program is making strides in weakening the cycle of poverty and natural resource gap. Our efforts establish that improving the economic stability of these marginalized groups and strengthening community's capacities to adapt to the harsh environmental realities of Kutch, are fostering long-term resilience and community well-being.



Strategic Water Conservation Initiatives in Kutch: Enhancing Water Access through Innovative Structures and Rainwater Harvesting

We leverage MGNREGA, Jal Jeevan Mission and other Government programs and resources to address water scarcity for drinking water security and irrigation in the arid desert and saline region of Rapar, Nakhatrana and Bhachau of Kutch. This year, we established total **54 irrigation structures** out of which **24 structures** were facilitated through leveraging MGNREGA funds, we developed **34 drinking water structures** wherein **7 water storage tanks, 1 well repair and 1 pond de-silting with waste weir repair and 25 RRWHs** are included. Through partnerships with Government schemes and donors leveraged **₹1.08 crores** this year.

The initiatives also included natural farming, kitchen garden, and SHG empowerment, benefiting **110 SHGs, 67 farmer groups, and managing 82 acres of community pasturelands**. These efforts are ensuring drinking water security, building resilience, fostering sustainable livelihoods for climate change readiness.



Enhancing Education of Children of Migrant Families: The Transformative Impact of LAMP in Chhattisgarh



Latitude: 21.834822

The Learning and Migration Program (LAMP), supported by the American India Foundation (AIF) and implemented by Samerth, ensures access to quality education for children in migration-prone areas of Chhattisgarh. Active in six districts—Kabirdham, Mahasamund, Sarangarh, Shakti, Dhamtari, and Balodabazaar—Samerth executes 10 Learning and Resource Centers (LRCs) as hubs for educational support.

Extensive training sessions were conducted for teachers, Anganwadi workers, School Management Committees (SMCs), Panchayati Raj Institutions (PRIs), and community members to promote awareness of the Right to Education (RTE). LRCs focus on sustaining education for migrant children, emphasizing foundational literacy and numeracy, while addressing the needs of marginalized communities like the Baiga tribes & Gond tribes. LRC's are equipped with library books, STEM kits, FLN kits, Art & Craft corners for ensuring joyful learning space for children.



Samerth has renewed its partnership with State Council of Education & Training (SCERT) for 2024-25, continuing the impactful Learning & Migration Program (LAMP). This year, LAMP has raised awareness and supported irregular children, successfully reintegrating 424 children into formal education with the support of school teachers.



Breaking the Cycle of Educational Disruption: LAMP's Impact on Migrant Families in Chhattisgarh:

Seasonal distress migration in India affects over 140 million people annually, disrupting education and perpetuating poverty. Samerth's Learning & Migration Program (LAMP), supported by the American India Foundation, tackles this issue in six districts of Chhattisgarh. A 2023 survey of 7,000 households revealed 3,388 migrant families, prompting Samerth to counsel parents and children on education. This encouraged 2,748 families to leave children with relatives for stable schooling.

In Dhamtari's Kandel GP, migration rates among children dropped from 30% in 2019-20 to 4% in 2023-24, thanks to awareness sessions on Government schemes. Samerth's interventions, including Learning Resource Centers, STEM kits, and remedial classes, have significantly reduced educational disruptions caused by migration.

Empowering Sustainable Livelihoods: Samerth's Collaborative Approach to Community Development in Chhattisgarh



Conducted training for 288 Village Development Committee members and 344 community members on Non Timber Forest Produce (NTFP) and forest-based livelihoods.



Reached 15,892 families in three years, including 5,211 in 2023-24, by aligning with government schemes across five blocks of four Districts.



Distributed 105 quintals of indigenous seeds and vegetable seeds to 350 farmers.



Seed banks are Established in 12 villages across three districts

Empowering Tribal Communities and Landscape Restoration: Milestones of the Central Highlands Restoration Program (CHiRP)

The Central Highlands Restoration Program (CHiRP) as a program is making strides in conserving over 72.49 ha. by integrating sustainable practices and fostering local

participation, CHiRP has transformed the Kabirdham landscape which is ecologically rich and boasts of a mosaic of forests and agricultural land use and form on which livelihoods of tribal communities like Baiga and Gond depend.

Many critical global challenges—overpopulation, biodiversity loss, climate change, food insecurity, and migration—are deeply connected to landscape degradation. To address these, Commonland in partnership with Samerth has identified four key losses resulting from land degradation: loss of hope, social networks, biodiversity, and economic value. In response, Commonland developed the 4 Returns Framework



Return of Inspiration



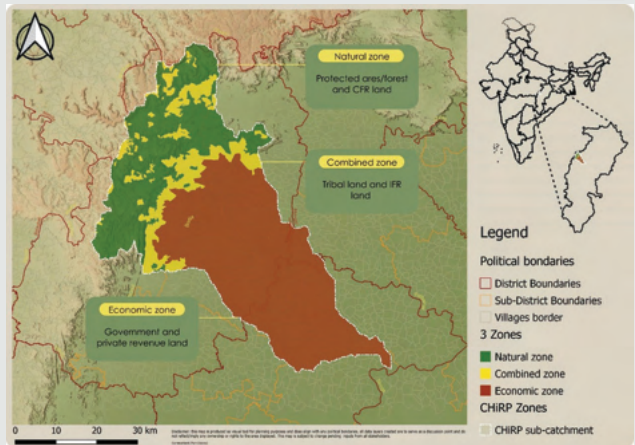
Natural Returns



Social Returns



Financial Returns



Applying this framework, the Kabirdham landscape has been strategically divided into **three zones**:

- **Natural Zone:** The forested Maikal hills.
- **Combined Zone:** Transitional areas at the base of the hills, *(Above zones are home to tribal communities like Baiga (PVTG), Gond)*
- **Economic Zone:** Plains, are primarily occupied by farming communities.

Samerth has played a pivotal role in driving restoration efforts within the **Natural and Combined zones**, fostering ecological balance and supporting local livelihoods in **10 villages of 3 Gram Panchayats** in Bodla Block of Kabirdham District. In addition to this, with support from the Global Green Grant Fund, we have reached out to 9 villages of 3 Gram Panchayats.



Community-managed nursery initiative, covering **0.325 hectares** and generating **INR 59,830** through the sale of **2,468** forestry and fruit saplings in one season

The Kabripathra SHG expanded its activities in 2023 to include the marketing of vegetable saplings such as brinjal, chili, tomato, and cauliflower. This initiative earned INR **2,450** from the sale of **2,285 saplings** in local markets, representing a meaningful step towards market integration and financial independence.



Sal seed aggregation and marketing initiative managed by SHGs resulted in the collection of **150 quintals**, earning INR 2,70,000 and yielding a **net profit of INR 90,000**



Samerth's CHIRP program has successfully implemented agroforestry over **30.49 hectares**, supporting **29 farmers**. Communities are currently managing **10.25 hectares** of bamboo patches, with **80 farmers** overseeing the growth of **15,880** new shoots and processing **2,558** culms. Additionally, mahua nets have been supported to **54 farmers** to promote sustainable harvesting practices of mahua flowers. Furthermore, **12.07 hectares** of grassland are being maintained to support ecological balance, and address the issue of open grazing and fodder availability.

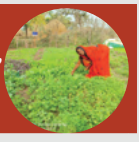


Collaborating with the Livestock Department, in 2023 the community secured 2.5 quintals of Napier grass and 29 kg of Sudan Grass from Samerth resulted in over 42 quintals of production, supporting local cattle through stall feeding. CHIRP's holistic and comprehensive approach attempts to establish prototypes of landscape restoration and sustainable development in tribal landscapes.

HDFC Parivartan: Empowering Sustainable Growth in Bemetara through Holistic Rural Development

Since January 2022, the **Holistic Rural Development Program (HRDP)**, Parivartan, spearheaded by Samerth in partnership with HDFC Bank Ltd.'s CSR division, has been revitalizing **12 villages in Bemetara district**. With a goal to foster sustainable community growth, the initiative is on track to full fill its objectives by December 2024 through comprehensive interventions in natural resource management, education, skill development, agriculture, health, and financial literacy.

30 Farmers adopted onion cultivation as a third crop, 120 mechanized farming, 30 SRI line sowing, 24 Kodo millet farming and 40 high-value vegetable production



4 Self Help Group Supported with Tool Bank, 7 villages supported with solar drinking water, 10 farmers supported with farm ponds

5 Farmers supported with lift irrigation facility, 30 farmers adopted SRI line sowing method for farming,



5 Smart schools are established, 40 farmers supported with earth worm production units

Strengthening Agriculture and Water Conservation: Chhattisgarh High Impact Mega Watershed Program



Samerth implementing High-Impact Mega Watershed Program, in collaboration with the Bharat Rural Livelihoods Foundation (BRLF) was launched in 2018 across 26 blocks in 12 districts of Chhattisgarh. As one of the implementing CSO's Samerth initiated work in Bodla and Pandariya blocks of the Kabirdham district. This initiative has resulted in leveraging ₹236 crores across 206 villages, benefiting 65 Gram Panchayats during the period from 2019 to 2024.

This program is particularly crucial for sustaining the Baiga families, who make up more than 40% of the local population, as it addresses pressing issues such as severe water runoff, soil erosion, and limited irrigation, which hinder agricultural productivity. Until 2022, the project had scaled up its efforts to enrich the lives of 16,002 families by employing Ridge to Valley watershed management principles, aimed at fostering substantial agricultural yield and enhancing community resilience.

As the project continues to make strides, it holds the potential to transform agricultural practices and improve the livelihoods of countless farmers in Chhattisgarh's rural landscape.



**More than Rs. 236 Crores
Leveraged for Soil and Moisture
Conservation**



Interventions yielded results during the period 2018 to 2024:

149%

Increase in
Cropping
Intensity



Leveraging funds from the Mahatma Gandhi National Rural Employment Guarantee Scheme (MNREGS) and the Bharat Rural Livelihoods Foundation (BRLF), a transformative initiative in Chhattisgarh has delivered key projects, including the construction of 131 new wells and the deepening of 177 ponds this year. The program also introduced innovative agricultural practices such as trellisfarming and line sowing across substantial land areas.

1 to 1.5 meter

Ground level
increase
enhancing
irrigation to
2796 Ha



Cropping intensity surged by 149%, groundwater levels increased by 1 to 1.5 meters, enhancing irrigation across 2,796 hectares. Moreover, household incomes rose significantly, with 67% of families now earning over ₹100,000 annually, totaling 11,491 households benefiting from these changes. The initiative has also led to a notable reduction in soil erosion, impacting an area of 5,148 hectares and signaling a sustainable evolution in the region's agricultural framework.

67%

of 11491 HH
income
increased



Complementing these efforts, the Chhattisgarh Water Resource Development Programme, implemented directly by Samerth, has significantly advanced water management infrastructure. From April 2023 to March 2024, the program positively impacted six villages, repairing and constructing critical watermanagement structures, such as checkdams and earthdams, which benefited 261 households. This multi-faceted approach not only promotes agricultural productivity but also enhances water conservation efforts, setting a precedent for sustainable development in rural Chhattisgarh.

SUMMARY

Balance Sheet for the year ended on 31st March 2024

Name of the Public Trust : Samerth Charitable Trust

Trust No. E-9150 Date of Registration : 30th September 1992

Address of the Trust's office : Q-402, Shrinand Nagar Part -2, Vejalpur, Ahmedabad - 380051

Balance Sheet as on 31st March 2024

Bank Account No. of Trust for transaction of Foreign Contribution: 40096325429 - State Bank of India

F.C.R.A. No. 041910243 Dated: 5th December 2000 (Renewal till 31st December 2026)

PARTICULARS	ANNEXURE	Foreign	Indian	31.03.2024	31.03.2023
FUNDS & LIABILITIES					
TRUST FUNDS	A	41,71,581	14,28,573	55,00,154	60,60,371
CORPUS FUND	B	24,86,95,855	23,55,253	25,11,51,108	-
GENERAL RESERVE & EARMARKED FUND	D	1,08,11,384	1,18,08,374	2,26,19,758	1,55,84,300
UNUTILIZED GRANT	H1	2,97,82,599	1,46,35,528	4,44,18,127	6,28,88,722
INCOME & EXPENDITURE ACCOUNT	E	-	2,32,863	2,32,863	3,43,481
TOTAL		29,34,61,419	3,04,60,591	32,39,22,010	8,48,76,874
ASSETS & PROPERTIES					
NET BLOCK OF FIXED ASSETS	C	41,71,581	14,28,573	56,00,154	39,27,760
GRANT RECEIVABLE	H2	10,19,950	-	10,19,950	2,88,194
CURRENT ASSETS, LOANS & ADVANCES	F	2,97,92,883	1,54,30,254	4,52,23,137	6,37,13,495
INVESTMENT	G	25,84,77,005	1,36,01,764	27,20,78,769	1,69,47,425
TOTAL		29,34,61,419	3,04,60,591	32,39,22,010	8,48,76,874

Accounting Policies & Notes forming part of accounts

O

As per our Report of even date

For, Samerth Charitable Trust

For, A S Shaikh & Co.
Chartered Accountants
Firm Reg. No. 139775W

For, H. Rustom & Co.
Chartered Accountants
Firm Reg. No. 108908W



Ms Gazala Paul
Managing Trustee



Aslam Shaikh
Proprietor
Membership No.162345
UDIN:24162345BKEOFF1090



HRD DALAL
Proprietor
Membership No.31368
UDIN:24031368BKGWBH3135

Date:13th August 2024
Place :Ahmedabad

Date :13th August 2024
Place : Ahmedabad

Date : 13th August 2024
Place : Ahmedabad

SUMMARY

Income and Expenditure for the year ended on 31st March 2024

Name of the Public Trust : Samerth Charitable Trust

Trust No. E-9150 Date of Registration : 30th September 1992

Address of the Trust's office : Q-402, Shrinand Nagar Part -2, Vejalpur, Ahmedabad - 380051

Income and Expenditure Account for the year ending 31st March 2024

Bank Account No. of Trust for transaction of Foreign Contribution: 40096325429 - State Bank of India

F.C.R.A. No. 041910243 Dated: 5th December 2000 (Renewal till 31st December 2026)

PARTICULARS	ANNEXURE	Foreign	Indian	31.03.2024	31.03.2023
INCOME					
GRANTS & DONATIONS REVENUES	H	5,72,14,537	4,10,32,105	9,82,46,642	9,29,02,746
DONATION CORPUS	H	24,86,95,855	0	24,86,95,855	-
INTEREST INCOME	I	89,48,791	17,63,508	1,07,12,299	30,45,513
OTHER INCOME		0	0	0	2,36,128
TOTAL		31,48,59,183	4,27,95,613	35,76,54,796	9,61,84,387
EXPENDITURE					
EXPENDITURE ON OBJECTS OF THE TRUST	J	4,79,43,514	3,51,23,099	8,30,66,612	8,24,77,269
ADMINISTRATIVE EXPENSES	K	91,05,888	44,36,036	1,35,41,924	93,76,654
REMUNERATION TO TRUSTEES	L	12,03,120	5,95,800	17,98,920	20,86,000
AUDIT FEES	M	5,64,240	1,39,245	7,03,485	5,84,000
CHARITY COMMISSIONER CONTRIBUTION	N	50,000	0	50,000	50,000
DEPRECIATION	C	6,62,261	3,15,862	9,78,123	8,81,786
EXCESS OF INCOME OVER EXPENDITURE	E	25,53,30,160	21,85,571	25,75,15,732	7,28,678
TOTAL		31,48,59,183	4,27,95,613	35,76,54,796	9,61,84,387

Accounting Policies & Notes forming part of accounts

O

As per our Report of even date

For, Samerth Charitable Trust



Gazala Paul

Ms. Gazala Paul
Managing Trustee

Date: 13th August 2024
Place: Ahmedabad

For, A S Shaikh & Co.
Chartered Accountants
Firm Reg. No. 139775W



Aslam Shaikh
Aslam Shaikh
Proprietor
Membership No.162345
UDIN:24162345BKEOFF1090

Date: 13th August 2024
Place: Ahmedabad

For, H. Rustom & Co.
Chartered Accountants
Firm Reg. No. 108908W



HRD DALAL
Proprietor
Membership No.31368
UDIN:24031368BKGWBH3135

Date: 13th August 2024
Place: Ahmedabad

Credibility Alliance Compliance

Accountability & Transparency

List of Board of Trustees

Sr. No.	Name	Age	Gender	Position	Occupation	Remuneration/ Reimbursement
1	Ms. Gazala Paul	59	Female	Managing Trustee	Managing Trustee, Samerth Charitable Trust	Rs.14,52,000/-
2	Dr. Yogendrasinh Jadeja	55	Male	Trustee	Director of Arid Communities and Technologies	ZERO
3	Ms. Chinmayi Desai	53	Female	Trustee	Programme Manager at SAATH Charitable Trust	ZERO
4	Dr. Sara Ahmed	61	Female	Trustee	Centre for Heritage Management, Ahmedabad University Adjunct Professor & Founder of Living Water Museum	ZERO
5	Mr. Gaurang Raval	41	Male	Trustee	Sauhard, Founder Trustee/Theatre Person	ZERO
6	Ms. Nafeeza Pavri	44	Female	Trustee	Independent Consultant, specializing in resource mobilization, communication and non-profit strategy and management.	Rs. 3,46,920/-

Note: None of the above trustees are related to each other

OUR BANKERS

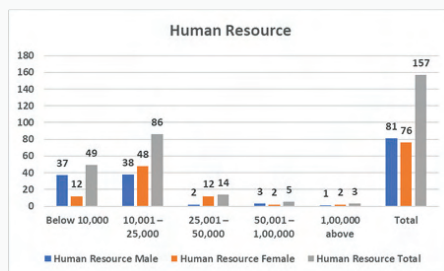
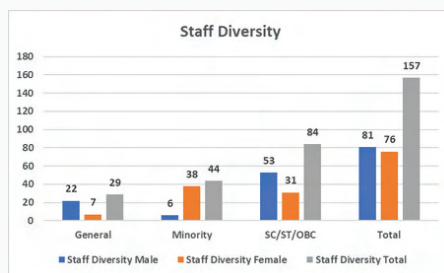
- Axis Bank Ltd., Vejalpur Branch, Ahmedabad.
- Bank of India, Panchavati Branch, Ahmedabad.
- State Bank of India, New Delhi Main Branch, FCRA Division, New Delhi.
- State Bank of India, Vasna Branch, Ahmedabad.
- State Bank of India, Kargi Road, Kota, Bilaspur, Chhattisgarh
- Indusind Bank, Shyamal Branch, Ahmedabad.
- HDFC Bank, Anand Nagar Branch, Ahmedabad.

Salary (Highest and Lowest)

Highest Paid Staff Rs. 14,52,000/- per annum (Ms. Gazala Paul Managing Trustee) & Lowest – Rs. 1,08,000/- per annum

Foreign Travel: Rs. 38,943 in 2023-24.

Domestic Travel: Rs. 76,58,662/- (for field and Programme Personnel)



STATUTORY AUDITORS

M/s. H Rustom & Co.

Mistry Chambers, 1st Floor, Near Cama Hotel, Khanpur, Ahmedabad 380 001

☎ 079-25600733 ✉ hafezdalal@gmail.com

M/s. A.S. Shaikh & Co.

201, Park Avenue, Saiyedwada, Khanpur, Ahmedabad 380 001

☎ 9898769909 ✉ aslamskh@gmail.com

THANK YOU!

Dear Partners, Donors, Well Wishers and Supporters

The Support we have received from institutions, government, corporates and generous individuals has enabled us to touch lives at the grassroots levels

PARTNERS



INSTITUTIONAL DONORS

- American Friends Edelgive Foundation, USA
- Asha For Education, USA
- Ashraya Hasta Trust
- Azim Premji Philanthropic Initiatives
- Baal Dan Charities, USA
- Bharat Rural Livelihoods Foundation (BRLF)
- Commonland Foundation, Netherland
- C U Shah Charitable Trust
- Green Hub Central India Project
- Global Green Grant Fund, USA
- Gujarat CSR Authority, Ahmedabad, Gujarat
- India Development and Relief Fund, Inc., USA
- Krupa Limited
- Marcus Business Services LLP
- Qi To Happiness Foundation
- Samerth-USA
- Shree Raj Saubhag Satsang Mandal, Mumbai & Sayla, Gujarat, India
- The American India Foundation, USA
- The Ford Foundation, USA
- The Green Cliffe Foundation UK
- The Mahavir Trust, UK.
- The National Philanthropic Trust
- Water Harvest Limited.
- Wipro Foundation
- Wheels India Niswarth Foundation, USA/India
- Microsoft Corporation (India) Private Limited

INDIVIDUAL DONORS

- Mr. Ajay Doshi & Ms. Jyoti Ajay Doshi
- Mrs Bhatia Ketki
- Mr. Emmanuel D'Silva, Mumbai India/USA
- Mr. Hasan A Lala & Mrs Amina H. Lala, Mumbai
- Mr. Jaysukhlal Shantilal Mehta, UK
- Mr. Chandrakant Sajanlal Choksi
- Mr. Mahendra Jagirdar
- Mr. Narendra and Ms. Jyoti Popat, USA
- Mr. Nemchand Shamji Shah, Kenya
- Mr. Pravin Kumar Tandlay
- Mr. Yusufi Esmailji Nalwala
- Mr. Javid Ismail Baig

CORPORATES

- PPG Asian Paints Pvt Ltd
- Cygnet Infotech Pvt. Ltd.
- Truetschler India Pvt. Ltd.
- Siddhantam Tollway Pvt. Ltd.
- HDFC Bank Limited
- Wealth First Portfolio Managements

COLLABORATION

- Department of Women and Child Development, Chhattisgarh
- Department of Rural Development-MGNREGA Cell, Government of Chhattisgarh
- State Council of Educational Research and Training (SCERT), Chhattisgarh
- DFO Kabirdham District Chhattisgarh, State Forest Department



Samerth Charitable Trust

Q-402 Shrinand Nagar Part 2
Vejalpur road, Ahmedabad – 380051,
Gujarat, India
Phone: +91-79- 26829004 | 26825731

AHMEDABAD URBAN OFFICE :

24/A Gulzar park Gate #2, Near Chinar Park, Sarkhej Road FatehWadi,
Ahmedabad 380055

CHHATTISGARH OFFICE :

T-15, Sai Vatika, Deopuri, Dhamtri Road, Raipur, Chhattisgarh - 492015
Phone: 0771-4025628 / 0771-4280676

GUJARAT OFFICE :

Village : Gagodar On National Highway #15, Taluka : Rapar,
District : Kutch 370145

www.samerth.org | info@samerth.org



[samerthcharitabletrust](https://www.instagram.com/samerthcharitabletrust)



[samerthtrust](https://www.facebook.com/samerthtrust)



[@SamerthTrust](https://twitter.com/SamerthTrust)



[linkedin.com/in/samerth-trust/](https://www.linkedin.com/in/samerth-trust/)

Registered in 1992 under the Bombay Public Trust Act 1950, Trust Registration No. E-9150/Ahmedabad, Samerth is a non-government, not for profit organization Also registered under Ministry of Home Affairs, India, to receive foreign funds, 12 A and exempted under 80G Samerth is tax exempted under section 501(c) for receiving a donation in the USA Certified by Credibility Alliance for adhering to Desirable Norms prescribed for Good Governance